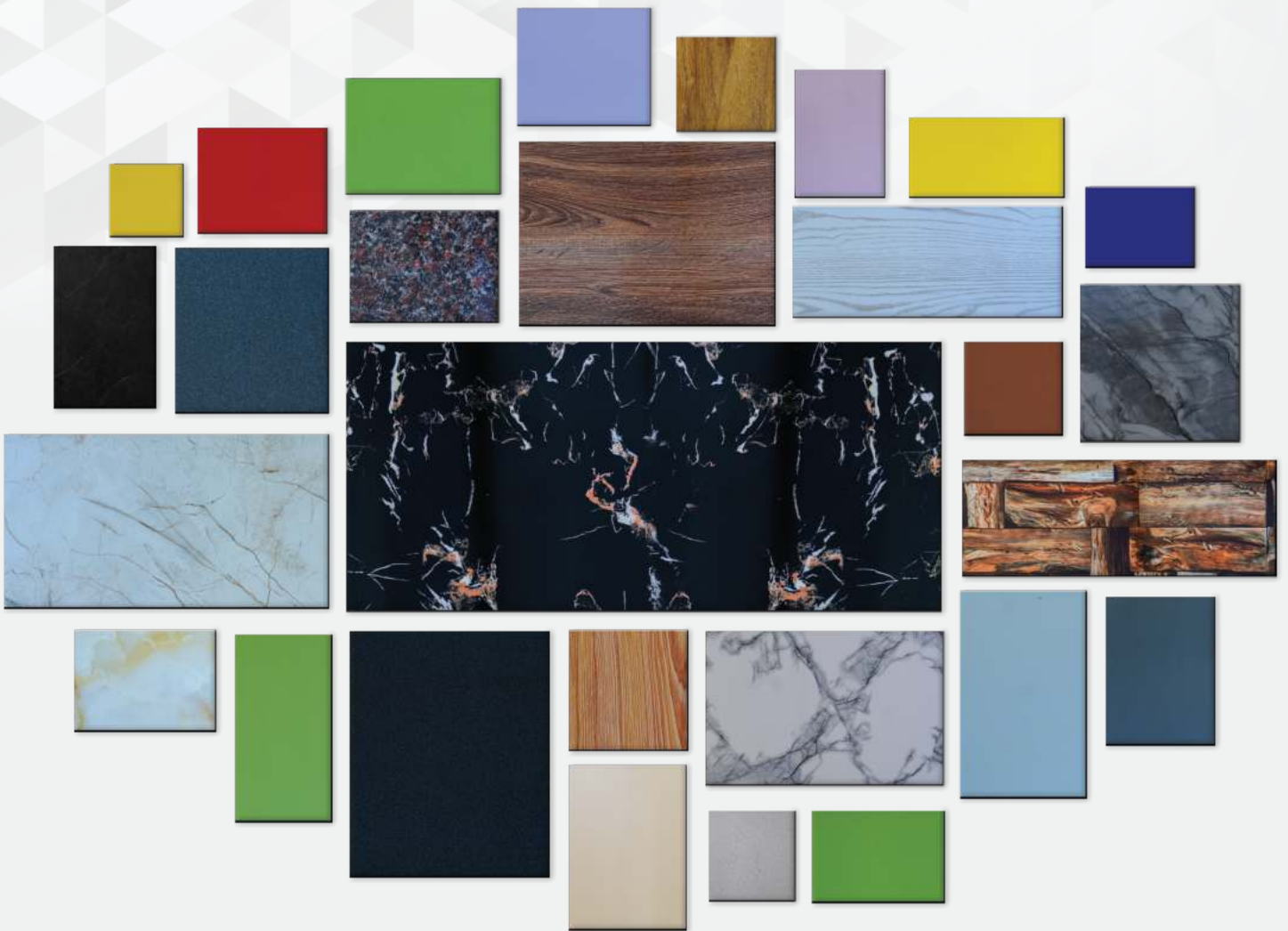




**DEEN**  
INDUSTRIES



**GREEN PVC FOAM BOARD**

SAVE TREES, SAVE LIFE

# ABOUT DEEN INDUSTRIES

---

ABOUT COMPANY:

## OUR HISTORY

---

The company strives to use specialized knowledge to not only enhance the quality of its products but also launch them at competitive prices. The Deen Industries initiated the manufacturing industry relying on its motivated and innovative staff to drive sustainable growth, market leadership, building a trusted brand and commitment to the ethical values and social responsibilities.

It will spare no effort to be recognized as an authentic, dynamic and entrepreneurial company that values social rights.

## OUR VISION

---

We are committed to provide a better life to everyone with innovative products, and by conserving natural resources like Trees.

- Competitive prices
- Experienced supplier
- Timely delivery
- Excellent service

## OUR MISSION

---

They have spent a considerable amount of time working in their profession, and as a result, have developed a deep understanding of the intricacies and nuances of their work. Design the sustainable and affordable products for the customers.

- Competitive prices
- Experienced supplier
- Timely delivery
- Excellent service

Environment, Quality, Affordability, Customer Delight.



# MAIN PRODUCTS

## PVC FOAM BOARD



# PRODUCT RANGE

## PVC FOAM BOARD

### SINGLE LAYER & UV



Mela White



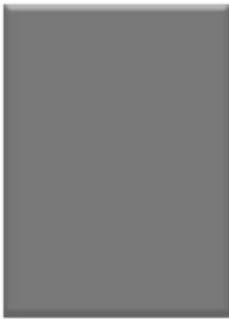
Super White



Black



Dark Grey



Light Grey



Brown



Red



Yellow



Green



Beige



Blue



Pink



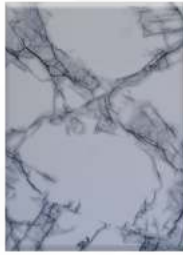
# GREEN PVC FOAM BOARD

---

UV, Hotstamp + Lamination



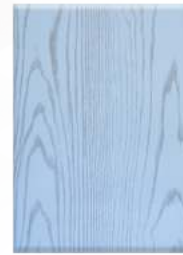
Gm-7302



Gm-7301



Gm-7303



Gw-7104



Flg-7403



Gm-7304



Gm-7305



Gw-7103



Gt-7201



Gw-7102



Gw-7101



Gw-7106



Gw-7107



Gw-7105



Red Glitter



Black Glitter



# GREEN PVC FOAM BOARD

---

UV, Hotstamp + Lamination



Gw-7108

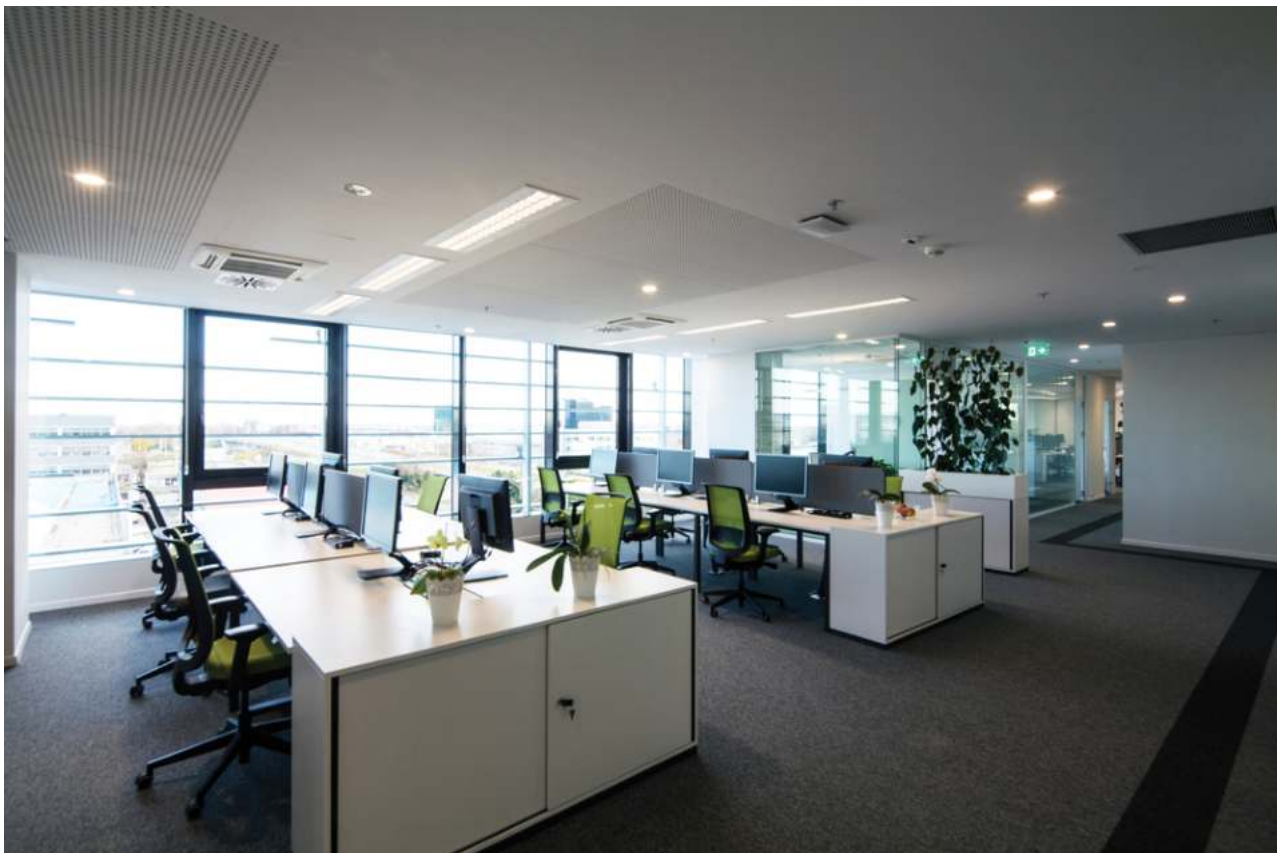


# USAGE OF PVC FOAM BOARDS

# OFFICE

# CABINETS

---



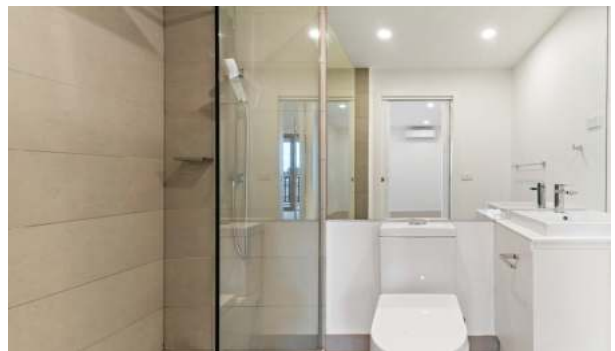
# KITCHEN CABINETS

---



# BATHROOM CABINETS

---



# VANITY



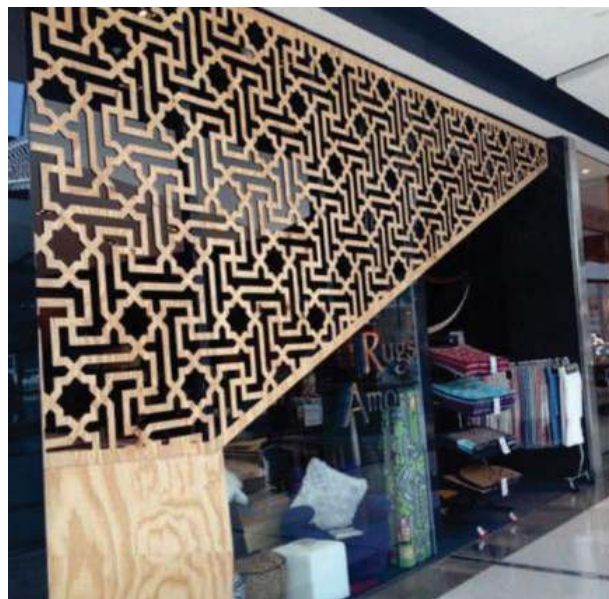
# DOOR PANELS

---



# LASER CUTTING

Laser Cut boasts over 10 standard patterns, but can also be customized, for interior and exterior applications. Designers can specify the size and shape of the cutouts, thus controlling flow of light through the metal, Dividing interior spaces or creating an exterior feature, screen or faced with rhythmic and reflective 1 Quantities is now at your fingertips.



# GREEN PVC FOAM BOARD

Green pvc foam board is a new product introduced by Deen Industry. It is a light weight, Light strength, self extinguisher, sound proof moisture proof, corrosion resistant & a life long product. Also it can be nailed, drilled, cut & riveted just like wood . It has ease of secondary, processing and thermoforming. Furthermore, it provides an elegant appearance with ease of rich and sharp color printing, laminating, painting and allied process. GREEN PVC foam board is a wood replacements, having advantages over it . It is waterproof, damp proof, alkali- resisting, and anti-vibration. It can also contact with cement block directly with low maintenance costs. Hence, Green PVC Foam Board is optimum choice for wood replacement.

## PRODUCT RANGE

|                  |  |
|------------------|--|
| <b>Length</b>    | 2440 mm & Customized Size  |
| <b>Width</b>     | 1220 mm  |
| <b>Thickness</b> | 3 – 25 mm  |
| <b>Density</b>   | 048 - 070  |
| <b>Fashion</b>   | Smooth, Texture,   |
| <b>Available</b> | White, Black, Gray, Yellow, Blue, Green, Chocolate, Beige, Brown etc.... |

## TOLERANCES

| Range ( Based on Thickness ) | Thickness            | Length             | Width              | Rectangularity     |
|------------------------------|----------------------|--------------------|--------------------|--------------------|
| < 12                         | WITH IN $\pm$ 0.5 mm | WITH IN $\pm$ 5 mm | WITH IN $\pm$ 3 mm | WITH IN $\pm$ 5 mm |
| > 12                         | WITH IN $\pm$ 0.5 mm |                    |                    |                    |

## FEATURE

- Tough and smooth surface
- Good flatness & No Deformation
- High holding nail force
- Moisture & water proof
- Termite and Pest Proof
- Fire retardant
- Maintenance Free
- Weather & ageing resistance
- Light Weight & easy to install
- Environmental friendly
- No swelling or shrinking
- Sound - insulated

## APPLICATION

Advertising signs, billboard, Display, Exhibition stands Office & Home furniture, Cabinets, wardrobes, bathroom, vanities building decoration, partitions, Garden fencing, Exterior wall cladding, Fall Ceiling, pool Decking, Shuttering, prefabricated House, Panels for multiple Applications & many more.



## TECHNICAL PROPERTIES

| PROPERTIES            | TEST          | UNIT     | VALUE     |
|-----------------------|---------------|----------|-----------|
| <b>Physical</b>       |               |          |           |
| Density               | DIN 5347      | B/CC     | 0.55-0.70 |
| Hardness              | DIN 53505     | Shore 'D | 60        |
| Water Absorption      | DIN 53459     | %        | 1.0       |
| <b>Mechanical</b>     |               |          |           |
| Tensile Strength      | DIN 53455     | Mpa      | 1.5       |
| Elongation at Break   | DIN 53455     | %        | 1.5       |
| Modulus of Elasticity | DIN 53457     | Mpa      | 900- 1500 |
| I zed impact Strength | ASTM D 256    | KJ / M'  | 9.0       |
| <b>Electrical</b>     |               |          |           |
| Dielectric Strength   | DIN 53481     | KV/ cm   | 90        |
| <b>Thermal</b>        |               |          |           |
| Vacant Softening      | DIN 53460     | KC       | 73        |
| Temperature           |               |          |           |
| Coefficient of Liner  |               |          |           |
| Expansion             | DIN 53752     | Mm/ m2C  | 0.08      |
| Thermal Conductivity  | DIN 52611     | W/MK     | 0.05-0.07 |
| <b>Flammability</b>   |               |          |           |
| UK                    | BS 476 PART 7 |          | Class 1Y  |
| France                | NFP92-501     |          | Class m 1 |
| USA                   | UL 94         |          |           |

\* 15 MPA for free foam sheet with typical density 0.7g/cc

\*13 MPA for free foam sheet with typical density 0.55 g/cc

\*\* 15% for free foam sheet with typical density 0.7 g/cc

\*\* 13% for free foam sheet with typical density 0.55 g/cc

\*The colours shades are only represented)

All colours are also available from 3 to 30mm thickness

Green PVC Foam Board is available in standard size 4×8 and various thickness from 3.5mm to 30mm.

Also make the size and thickness according to the customer's demands.



## ENSURING A BETTER BARGAIN

Green PVC Foam Board offers several benefits: wood , plywood and MIF IN Terms of Attributer and cost. Having consistent cell structure and bond strength helps Best wood score this edge.

| Characteristics             | Green Board   | Regular Wood                                    | Plywood  | MDF  |
|-----------------------------|---|---|--|--|
| DURABILITY                  | Highly durability owing to physical attributer                                | Susceptible to external factors and degradation | Susceptible to decay under wet weather condition                     | Highly vulnerable to disfiguration when in contct with water     |
| WORKABILITY                 | Lighter and easy to handle and work upon                                      | Heavy and difficult to work upon/install        | Edges and thickness not alterable                                    | Heavy and clumsy to work with                                    |
| FIRE RETARDANCY             | 100% fire retardant   | Susceptible to fire                             | Must be specially treated to retard fire                             | Must be specially treated to retard fie                          |
| RAWPING                     | Does not wrap   | Warpes at the slightest defect in production    | My warp or expand if not sealed properly                             | May warp or expand if not sealed properly                        |
| DESIGNING/<br>The REFORMING | Can be thermoformed helping it to be adapted according to different utilities | Cannot be easily designed upon                  | Difficult edges and susceptible to splinters. Designing not possible | Dense and impossible to custom design                            |
| COST & SOURCING             | Economical and easier to source   | Is expensive and difficult to source            | Is expensive when labour cost is also calculated                     | Is expensive when labour cost is also calculated                 |
| ENVIRONMENT FRIENDLINESS    | Is most eco friendly and can be recycled                                      | Invoice deforestation                           | Uses harshchemicals that can of f-gas                                | Use harsh chemicals that can of f-gas                            |
| MOISTURE SUSCEPTIBILITY     | Is rot free and moisture proof  | Highly vulnerable to the effect and moisture    | Susceptible to moisture  | Highly susceptible to the effects of moisture                    |
| FABRICATION/<br>PRINTING    | Easy to fabricate/print on as GREEN has smooth Matte surface on both sides    | Difficult to fabricate and print on             | Difficult to cut detailed designs                                    | Impossible to stain properly . Dense and difficults to fabricate |
| SPLIT RESISTANCE            | Does not crack  | Prone to splitting                              | Edges highly prone to splitting                                      | Strips when screwed into   |
| UV RESISTANCE               | Highly resistant to UV rays   | Very prone to effects of UV rays                | Susceptible to UV rays   | Susceptible to UV rays   |

## PROVISION FOR EXACT CUSTOMIZATION

Green PVC Foam Board is offered in the international standard dimensions measuring 8×4 feer. Owing to the state of the art manufacturing facilities at Deen Industries, Green PVC Foam Board can be custom ordredin a thickness range varying from 3mm, with in wich, densities ranging from 0.45g/cc to 0.80g/cc are also available. This unique advantage of Green PVC Foam Board.



## **COMPONENT GEOMETRY**

Sharp corners and notches in thermoplastic components assist in the initiation and propagation of cracks, particularly if a component is under stress. Creases, grooves and sharp bends also form potential weakness.

## **COLOUR PANEL ORIENTATION**

Due to the extrusion process, the refractive index of pabel viewed in the line of extrusion can vary to that viewed across the line of extrusion . This effect of this are most prevalent on darker colour panels. When using multiple panels to gether it is vital that they assembled in the same orientation to avoid colour variations.

## **FORMING & SHAPING**

Green PVC Foam Board has a Board elastic processing windows (115-135 c) and a number of techniques are commonly used to shape PVC sheet in this softened elastic state.

## **FOLDING / LINE BENDING**

Green sheet can be folded to almost any angle by localized heating of the proposed fold, deformation either manually or automatically and cooling below the minimum softening temperature.

## **ELECTRICAL HEATERS ( IR or Ceramic, Metal ,Quartz Radiant )**

- Up to 10 mm sheet by heating on side
- Heating time approximately 1 minute per mm of sheet thickness
- Hating time halved by double sided heating
- This technique is know as hot line bender

## **ELECTRICAL HEATERS METAL TRACKS**

- Metal tracks maintained at a temperature of 140-160. C
- Up to 4 mm sheet by heating one side ,> 5mm is heated on both sides
- Heating time approximately 50 to 60 seconds per mm of sheet thickness

## **CONTROLLED HOT AIR BLOWER**

- Localized heating source used for mobile assemble work ho air welding guns.
- Used for small areas of sheet to be foddered.

## **FORMING**

Free Green PVC foam Board is thermoplastic material that has an elastic state and therefore formable at materials temperatures in the range of 115-135 \*c





### ASSURING A DEFINITE EDGE FABRICATION

Green PCV Foam Board can be easily machined using a traditional wood and metal working machines. However it should be noted that Green PVC being a thermoplastic is sensitive to heat build up . if excessive it can

results in deformation , softening and surface deterioration or discoloration of the sheet substrate. It should be noted that Deen product . might vary in performance in certain application so test should be carried out prior to use to establish the most suitable product . In general, slow feed rates with effective removal of the waste swarf.



### LIPPING / EGE BAND

Traditional PVC/wood edge bands and paper tapes can be used with Green PVC Foam Board with great ease.



### MOULDINGS

All kinds of wood router (fixed base or plunge) can be used with Green PVC Foam Board sheets to ensure that you get the best mould of your choice.



### CUTTING

Thin Green PVC Foam Board (less than 3 mm) can be cut using a blade or Stanley Knife Thicker sheets can be cut using conventional techniques including hand , circular, band and jigsaws , A fine – toothed blade is recommended for best results and tipped blades may also be used.



### FRETTING

Green due to its adaptability with existing wood working tools such as jigsaw,CNC,laser cutter,for you to get the variety of fret done.



### DRILLING

Green PVC foam Board may be drilled using, standard twist drills for metal . A twist drill with 30 angle of rifling offer the best machine results.



### Racks / cutouts

Traditional PVC/wood edge bands and paper tapes can be used with Green Foam Board with great ease.



### GRINDING

Green PVC Foam Board can be machined with belt or disc grinding machines using 80-150 grit abrasives The smooth skin: layer formed during the extrusion process may be removed to reveal the foam structure ( Deen F & C products).



### GLUE / ADHESIVES

All kinds of wood router (fixed base or plunge) can be used with Green PVC Foam Board sheets to ensure that you get the best mould of your choice.



### MANUAL CUTTING , SHEARING STAMPING

Green Foam Board can be manipulated Using these techniques, but are generally limited to thin board (up to 3 mm) and deformation of the cut edge may be observed.



### MILLING & ROUTING

Both Techniques are suitable for Green PVC sheet using single or twin edge cutting tools.





USE **10 PVC SHEETS**  
SAVE **1 TREE**

TAKE **CARE** OF THE **TREES**  
THEY WILL TAKE **CARE** OF YOU



Plot No.71 & 72 Industrial State Kahuta  
Triangle Yamaha Chowk Islamabad,  
Pakistan



[Info@deenindustries.com](mailto:Info@deenindustries.com)



+92 321 5168 080

